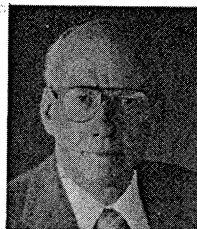




## VERNON J. EHLERS

### 32nd Senatorial District



**Office:** Room 806, Farnum Bldg., P. O. Box 30036, Lansing, MI 48909, (517) 373-1801

**Committees:** Economic Development; Education and Mental Health; Health Policy (Vice Chair); Natural Resources and Environmental Affairs (Chair)

**Biography:** Republican, of Grand Rapids; born February 6, 1934, at Pipestone, Minnesota; Calvin College 1952-55, University of California-Berkeley A.B., 1955-56, and Ph.D., 1956-60; married to Johanna (Jo) Meulink, 1958; children, Heidi, Brian, Marla and Todd; member and former elder, Eastern Avenue Christian Reformed Church; physicist, professor; 8 years, Kent County Board of Commissioners, 1975-83 (chairman, 1979-82); member, Sigma Xi, Phi Beta Kappa, American Physical Society, American Association of Physics Teachers, American Association for the Advancement of Science, American Scientific Affiliation, National Science Teachers Association, and Michigan Association of Environmental Professionals; elected to House of Representatives in November, 1982, and again in 1984; elected House Assistant Republican Floor Leader for 1983-84 and again for 1985-86 session; member of Committees on Colleges and Universities, Conservation and Environment, Public Health and Social Services and Youth. Author of numerous scientific articles and co-author of three books; elected to the Senate March 26, 1985, to fill vacancy; chairman of the Senate Public and Mental Health Committee; member of Senate Education Committee; member of Senate Economic Development, Trade, and Tourism Committee; vice chairman of Senate Higher Education and Technology Committee; elected to second term in the Senate November, 1986 (first full-term); elected Assistant President Pro Tempore for 1987-90; member of Education and Mental Health Committee; member of Economic Development Committee; vice chair of Health Policy Committee and chair of Natural Resources and Environmental Affairs Committee.

### 32nd DISTRICT ACCORDING TO THE 1982 APPORTIONMENT PLAN

