



MAXINE L. BERMAN

64th Representative District

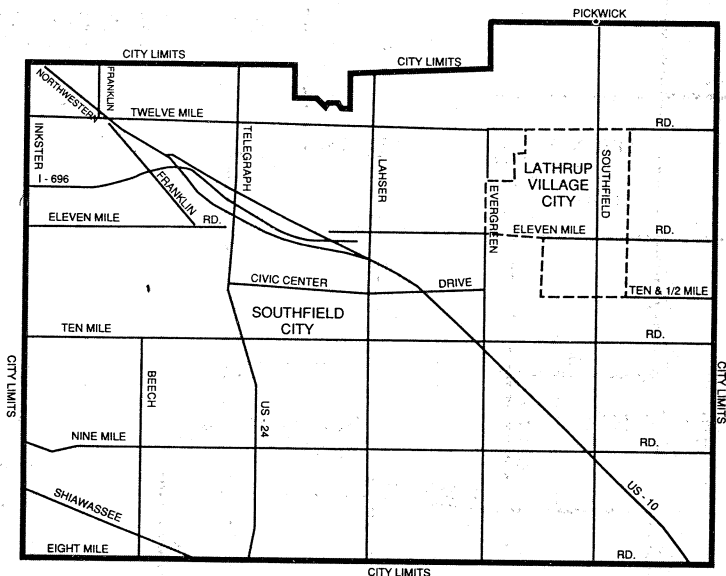


Office: Room 480, Roosevelt Building, P. O. Box 30014, Lansing, MI 48909, (517) 373-1788

Committees: Consumers (Majority Vice Chair); Economic Development and Energy; Elections (Chair); House Oversight; Taxation

Biography: Democrat, of Southfield; born April 17, 1946, at Detroit; Oak Park High School, 1964; B.A., English, University of Michigan, 1968; single; member, Congregation B'Nai David; high school English teacher, 1968-78, director of community research, Tribune/United of Oakland County; executive board, State Central, Oakland County Democratic Party, 17th District Democratic Party, Southfield Democratic Club, National Organization for Women, Phi Beta Kappa; affiliations, Michigan Democratic Agriculture Committee, Michigan Women's Campaign Fund, Oakland County Council-Children at Risk, Michigan Democratic Women's Caucus, Century Fund-Michigan Democratic Party, Hadassah, 100 Club-Oakland County Democratic Party, Women's Conference of Concerns, Southfield Arts Council, NAACP, Jewish Historical Society, National Council of Jewish Women, League of Women Voters, Gray Panthers, Detroit Women's Forum, Women's Justice Center, Friends of Humanities, National Association of Jewish Legislators; elected to House of Representatives in November 1982.

64th DISTRICT ACCORDING TO THE 1982 APPORTIONMENT PLAN



OAKLAND COUNTY
(Part)