



CONNECT  
**Michigan**

# Connect Michigan

*Energy and Technology Committee*  
Lansing, Michigan  
March 9, 2010

**Cassie Ruhlman**

Stakeholder Relations Manager - Michigan  
[cruhlman@connectednation.org](mailto:cruhlman@connectednation.org)

**Chip Spann**

Director – Engineering and Technical Services  
[cspann@connectednation.org](mailto:cspann@connectednation.org)



CONNECT  
**Michigan**

## *Who We Are and Why We Exist*

Connect Michigan is a subsidiary non-profit of Connected Nation, a national 501(c)(3) organization with primary offices in Washington, D.C. and Bowling Green, KY. Connected Nation's mission is to generate and support economic development by:

- 1) Expanding broadband availability and
- 2) Increasing broadband adoption rates

Connect Michigan has partnered with the **Michigan Public Service Commission** to launch a comprehensive statewide broadband mapping project, which will receive nearly \$1.8 million (\$1.3 for Broadband Mapping and \$500,000 for Broadband Planning) in federal funding under the National Telecommunications & Information Administration's State Broadband Data & Development Grant Program.



**CONNECT**  
**Michigan**

# *Mapping Initiative Objectives*

- To form strong working relationships with all of Michigan's broadband providers and support an environment of public/private collaboration on broadband issues among all stakeholders
- To create and maintain detailed maps of broadband coverage
- To utilize the resulting maps to accurately pinpoint any remaining gaps in broadband availability
- To assess the level of connectivity currently provided to Michigan's "community anchor institutions" (i.e., schools, libraries, hospitals, etc.)
- To assess broadband use among Michigan's businesses and residents, and identify barriers to broadband adoption



CONNECT  
**Michigan**

## *The State Broadband Data and Development Grant Program (SBDD): Broadband Mapping*

- The federal Broadband Data Improvement Act (P.L. 110-385) created the “State Broadband Data & Development Grant Program” (SBDD) that was funded by Congress in the American Recovery and Reinvestment Act at \$240 million.
- The SBDD Grant Program provides funds to states to create and maintain broadband maps for a period of at least two years (up to five years, pending funding availability)
- The Michigan PSC chose to partner with Connected Nation to create the Connect Michigan mapping and planning initiative.
- All 50 states, 5 U.S. territories, and the District of Columbia have applied for SBDD grants.



**CONNECT**  
**Michigan**

## *The Connect Michigan Timeline*

- On August 13, 2009 Connected Nation was named by Governor Jennifer Granholm as Michigan's "single designated entity" to receive SBDD grant funds.
- An application was filed with NTIA on August 14th.
- A grant award decision from NTIA was expected by September 30.
- A grant award announcement was made for Michigan on December 22.
- The Connect Michigan website [www.connectmi.org](http://www.connectmi.org) was launched on December 22.
- Work began immediately on the statewide broadband map.
- The Michigan Broadband Map will be released in conjunction with NTIA's deadline.



**CONNECT**  
**Michigan**

## *Connect Michigan Website*

**[www.connectmi.org](http://www.connectmi.org)**

### ➤ **Highlights:**

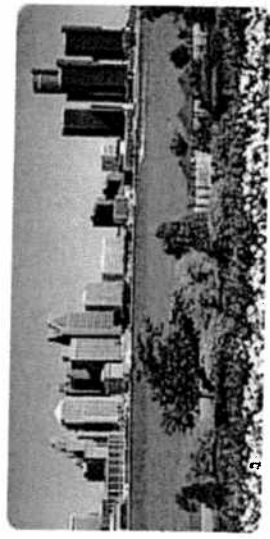
- Project goals and updates
- Grant program history and goals
- User Speed Test Tool
- Technology Assessment Survey
- Maps will be viewable and searchable
- Upcoming Research and Planning updates

News | Press Release | Contact Us



# CONNECT Michigan

- How has broadband changed your life?
- I want to test my connection speed.
- Tell us about your broadband access.



**BROADBAND GET INVOLVED PROVIDERS**

- Non-disclosure Agreement
- Data Collection Information

About Us | Mapping | Technology Assessment | Broadband Providers

Broadband is not available to me yet.

## Realizing Broadband's Benefits

Broadband access and technology adoption are critically important to economic development. It is a necessity if Michigan is to compete in our high-tech new world but many areas of Michigan still lack this lifeline to our information-driven economy.

Connect Michigan is working with the Michigan Public Service Commission to ensure all communities - rural and urban - have access to the unlimited benefits associated with broadband. We look forward to supporting Michigan's efforts to increase broadband availability and adoption across the state and link every community in Michigan to economic opportunity.



Info@connectmi.org | ©2010 Connect Michigan - All Rights Reserved

East Tribal Studies Institute Development

# Insert MI Map





**CONNECT**  
**Michigan**

# Broadband Mapping in Michigan

## Next Steps

- Connect Michigan's project team members are diligently working to contact each of Michigan's 150+ identified broadband providers via phone and e-mail.
- Connect Michigan will invite each provider to execute a Non-Disclosure Agreement (NDA) with us to protect proprietary and confidential data. A template NDA is available to download at [www.connectmi.org](http://www.connectmi.org)
- Once a NDA is executed with a given provider, Connect Michigan's project team members work with that provider to transfer data in a usable format. Data request forms have been distributed to aid in the process. While these forms strive to satisfy the objectives of this mapping initiative, we are prepared to receive data in formats other than those suggested in our template forms. For example, we can convert Auto CAD .dwg files, Map Info files, etc.
- Connected Nation's GIS division processes the transferred data and create a visual depiction of broadband service availability for each provider.



**CONNECT**  
**Michigan**

# Broadband Mapping in Michigan

## Next Steps - Continued

- Each provider will have an opportunity to approve the generated map of their specific coverage area before the information is applied to the aggregated statewide map.
- Once the map is complete, it will be made available to the public via an interactive, address-searchable online application called “BroadbandStat” at [www.connectmi.org](http://www.connectmi.org).
- Per the federal grant program rules, data will be submitted to NTIA at the Census Block level of detail.
- The maps will be continuously updated for a period of at least two years (up to five years, pending funding availability).
- Connected Nation’s Engineering & Technical Services Division and Research Division will undertake an ongoing process of validating the coverage information reflected on the maps.
- The public will also be invited to provide feedback via [www.connectmi.org](http://www.connectmi.org).



**CONNECT**  
**Michigan**

## **Broadband STAT:**

*The Nexus Between Mapping and Planning*

- The Broadband STAT application represents the nexus between mapping current broadband availability and planning for the future.
- Broadband STAT is a powerful, yet user-friendly and customizable tool that will allow state leaders & the public to:
  - Search for and identify broadband service at a specific address, including available speeds and service providers
  - Understand & track broadband deployment over time
  - Analyze and prioritize unserved and underserved areas using population and household density information
  - Track ARRA-funded broadband projects
  - Build and evaluate scenarios to help score and prioritize future broadband infrastructure proposals
  - Track broadband adoption rates and barriers to broadband adoption, community by community across the state.



CONNECT  
**Michigan**

# Broadband STAT

Ohio BroadbandStat

Locate

- Locations Found:
- 100 E MAIN ST, COLUMBUS, OH, 43215  
Provider: AT&T
  - 100 E MAIN ST, COLUMBUS, OH, 43215  
Provider: CELESTY NETWORKS
  - 100 E MAIN ST, COLUMBUS, OH, 43215  
Provider: TIME WARNER
  - 100 E MAIN ST, COLUMBUS, OH, 43215  
Provider: WDW
- Example: 100 Main St, Columbus OH

Mapping Tools

Locate Here: [Icons]

Back Advanced Analyze

Map Display:  
Inventory:

- Current
- Un served
- Half/Single Coverage

Adoptions:

- Broadband Adoption
- Computer Ownership
- Internet Adoption

Clear Map 0% 1.00%

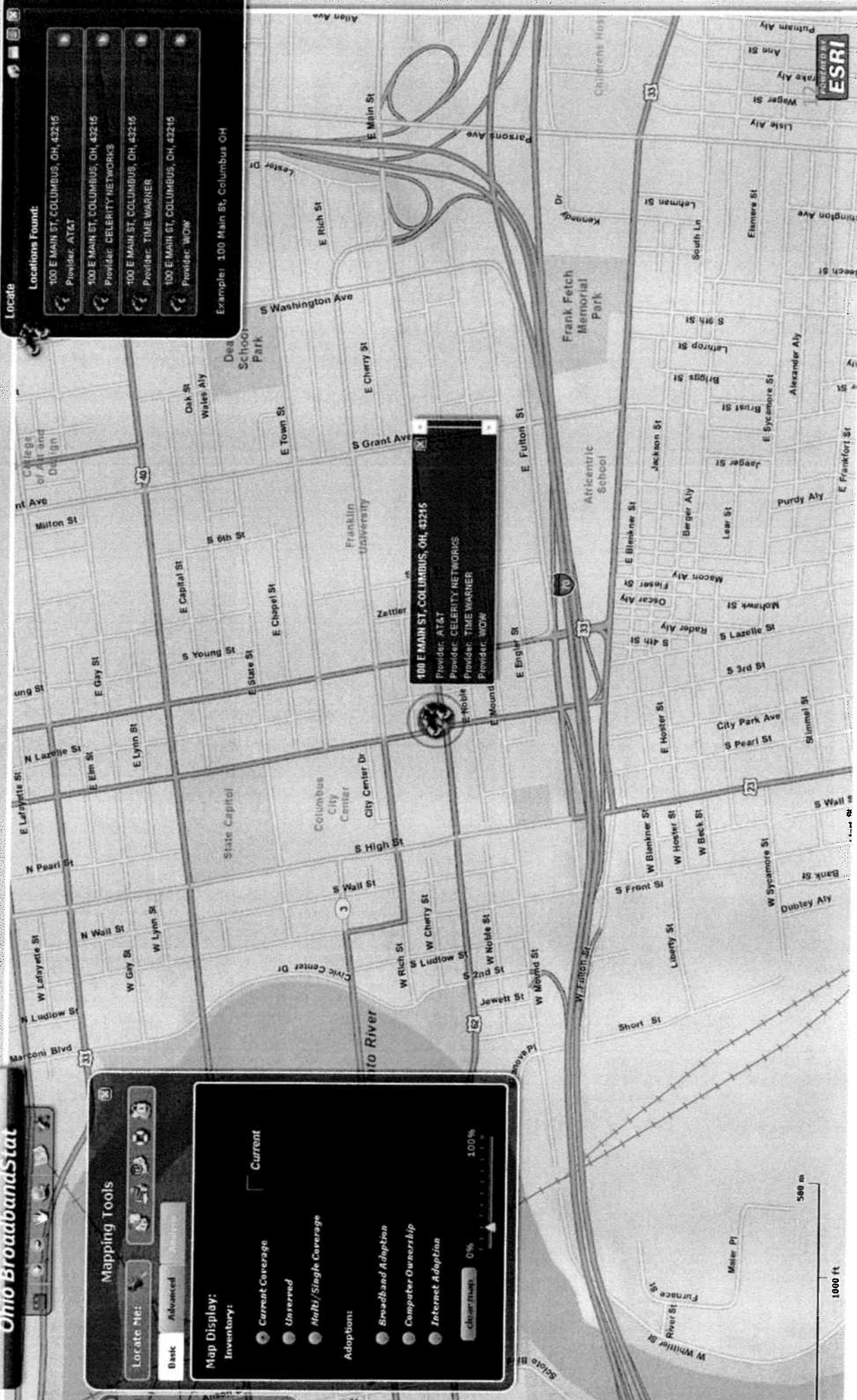
100 E MAIN ST, COLUMBUS, OH, 43215

Provider: AT&T

Provider: CELESTY NETWORKS

Provider: TIME WARNER

Provider: WDW

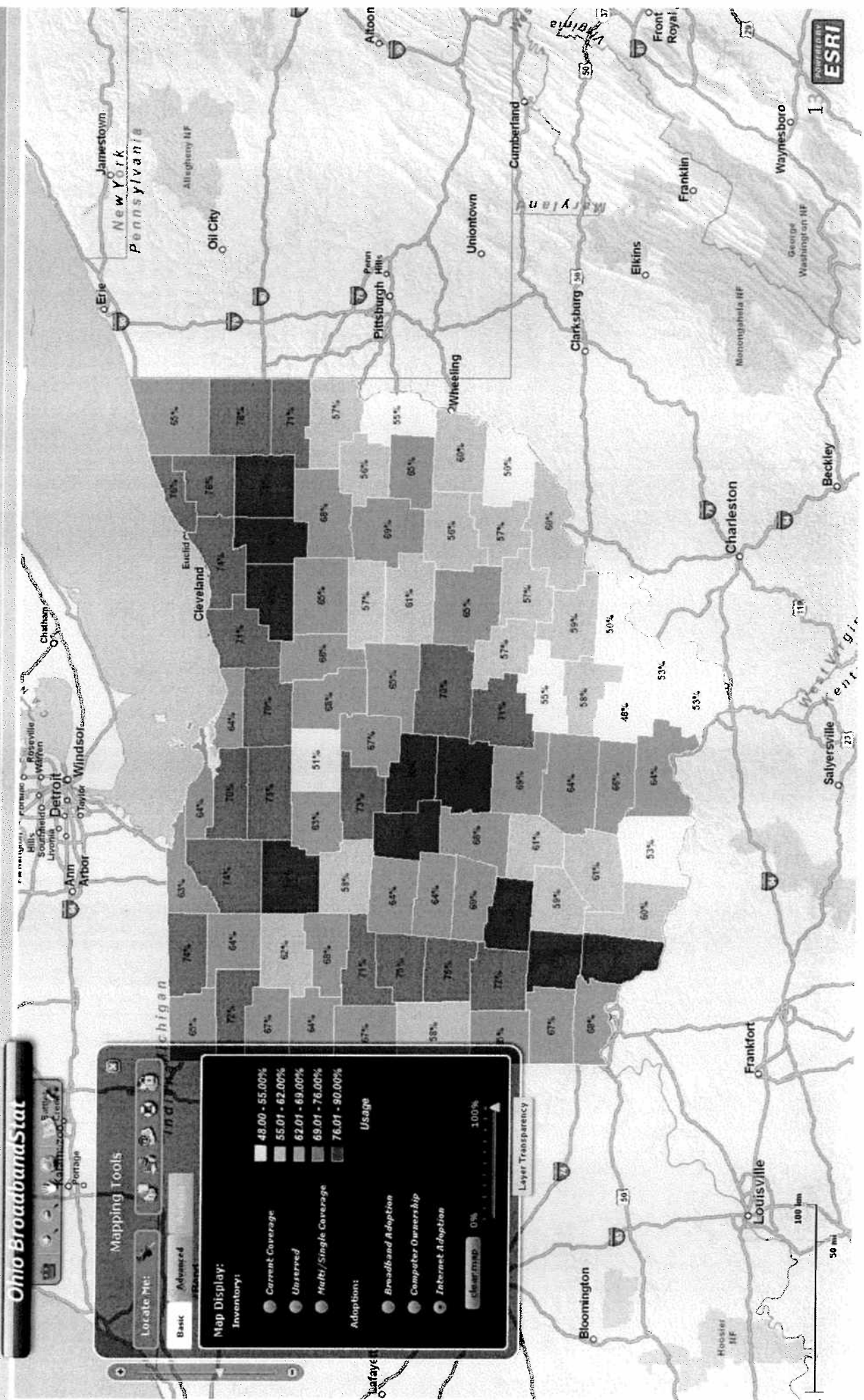






**CONNECT**  
**Michigan**

# Broadband STAT





CONNECT  
**Michigan**

# Broadband STAT

Ohio BroadbandStat

Locate

Locations Found:

- 100 E MAIN ST, COLUMBUS, OH, 43216  
Provider: AT&T
- 100 E MAIN ST, COLUMBUS, OH, 43216  
Provider: CELERTY NETWORKS
- 100 E MAIN ST, COLUMBUS, OH, 43216  
Provider: TIME WARNER
- 100 E MAIN ST, COLUMBUS, OH, 43216  
Provider: WOW

Example: 100 Main St, Columbus OH

Mapping Tools

Locate Me:

Map Display:

Inventory:

- Current
- Current Coverage
- Unreserved
- Multi/Single Coverage

Adoption:

- Broadband Adoption
- Computer Ownership
- Internet Adoption

0% 100%

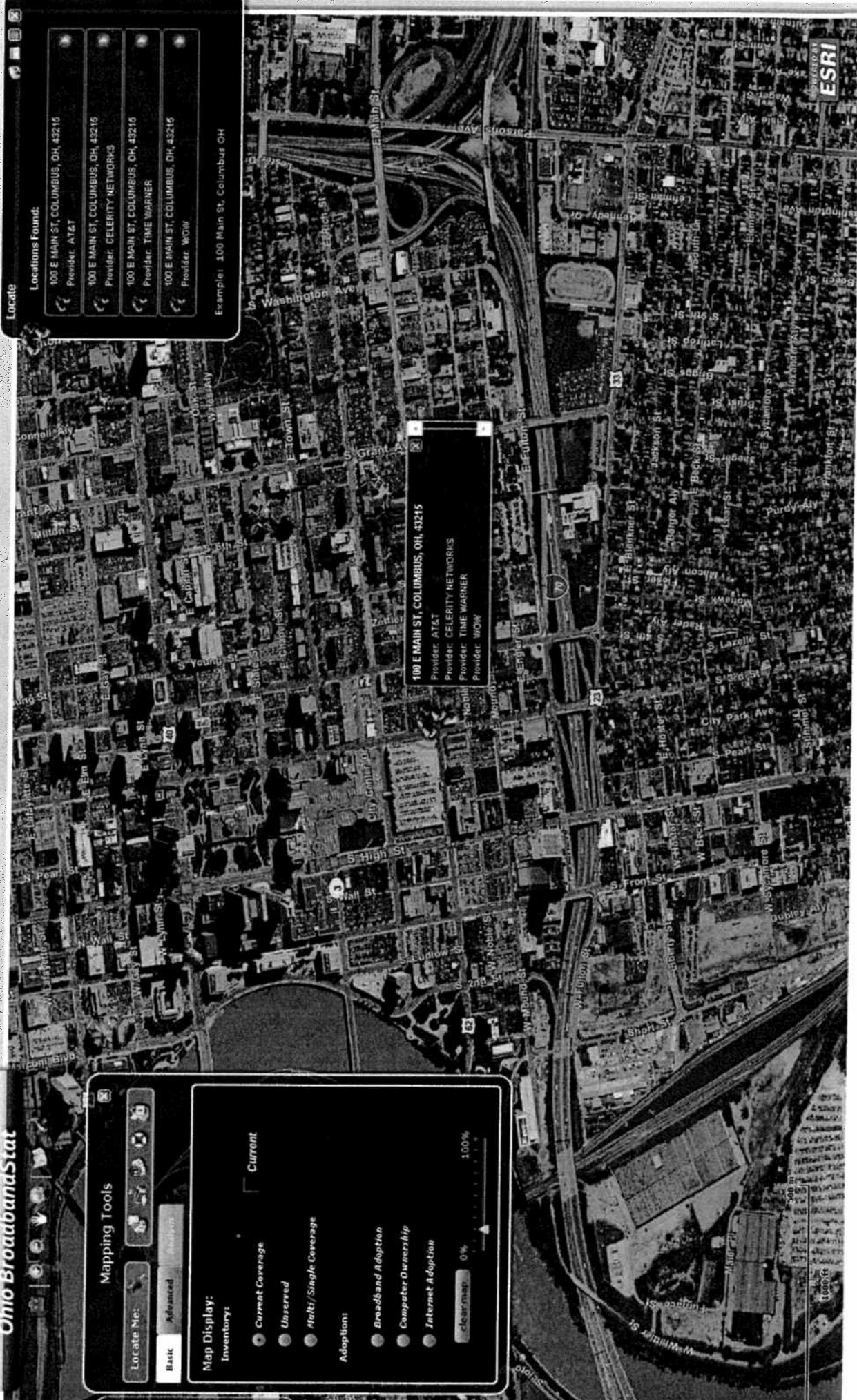
100 E MAIN ST, COLUMBUS, OH, 43216

Provider: AT&T

Provider: CELERTY NETWORKS

Provider: TIME WARNER

Provider: WOW



ESRI



**CONNECT**  
**Michigan**

## *The State Broadband Data and Development Grant Program (SBDD): Broadband Planning*

- Research on broadband adoption, broadband use, and barriers to broadband adoption will help complete the picture of Michigan's broadband landscape.
- To plan for the future, it's important to understand where the "digital divide" exists and what is causing it.
- Connect Michigan will launch a statewide research project to understand broadband adoption issues, including:
  - Adoption rates
  - Demographic factors that impact adoption
  - Monthly subscription costs
  - Computer ownership rates
  - Awareness/computer literacy issues and trends
- The resulting data will be used to create additional analytical layers within the Broadband Stat application.
- A sample research report for the State of Ohio can be found here: [http://connectoh.org/documents/Res\\_OH\\_06192009\\_FINAL.pdf](http://connectoh.org/documents/Res_OH_06192009_FINAL.pdf)





**CONNECT**  
**Michigan**

# Connect Michigan

**Cassie Ruhlman**

Stakeholder Relations Manager - Michigan  
[cruhlman@connectednation.org](mailto:cruhlman@connectednation.org)

**Chip Spann**

Director – Engineering and Technical Services  
[cspann@connectednation.org](mailto:cspann@connectednation.org)

**Robin Ancona**

MPSC Telecommunications Division Director  
[anconar1@michigan.gov](mailto:anconar1@michigan.gov)

**Susana Woolcock**

[woolcocks1@michigan.gov](mailto:woolcocks1@michigan.gov)

**Anne-Marie Clark**

[clarka@michigan.gov](mailto:clarka@michigan.gov)