

TRANSLINKED
driving global connectivity

TRANSLINKED Detroit Regional Chamber

Detroit Regional Chamber

- ❑ Established in 1903
- ❑ Largest US Chamber of Commerce
- ❑ 60-member board of directors
- ❑ More than 20,000 members representing 750,000+ workers
- ❑ Organized in 3 major areas:
 - Business Development
 - Advocacy / Public Policy
 - Membership (Growth, Products/Services, Events)

TRANSLINKED Detroit Regional Chamber

The Detroit Region

- 10 County Region
- Over 5.5 million people
- More than half of Michigan's businesses
- Gross Regional Domestic Product - \$200 Billion

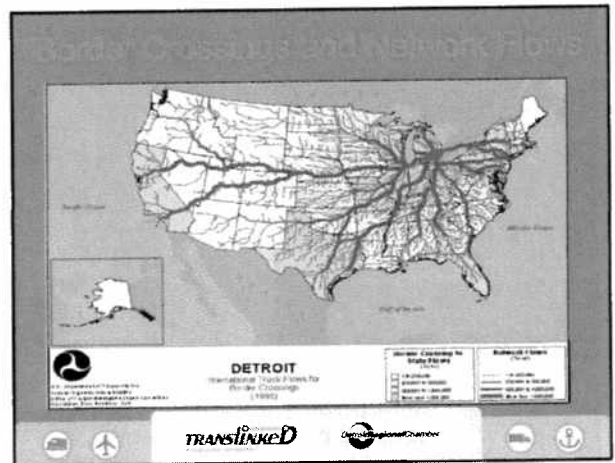
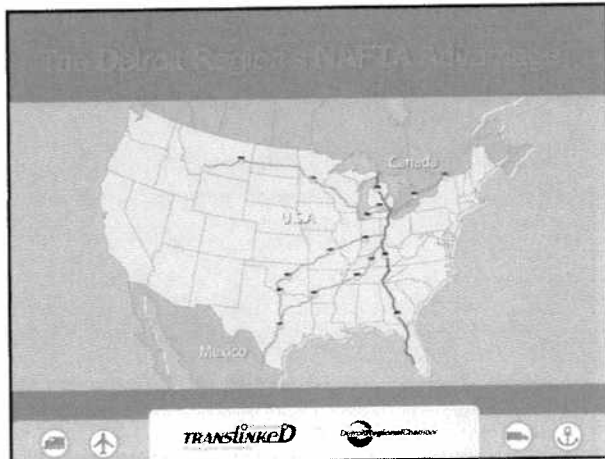
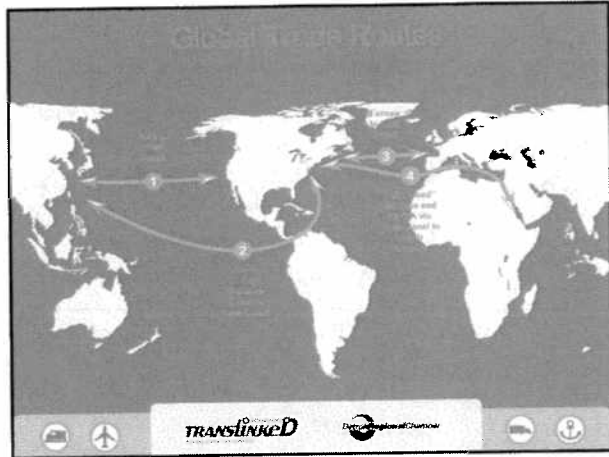
TRANSLINKED Detroit Regional Chamber

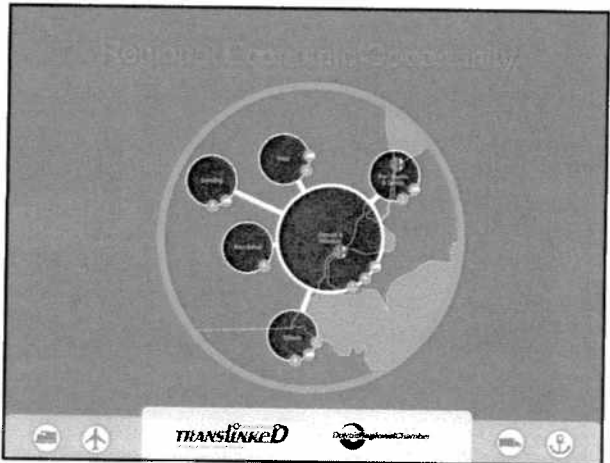
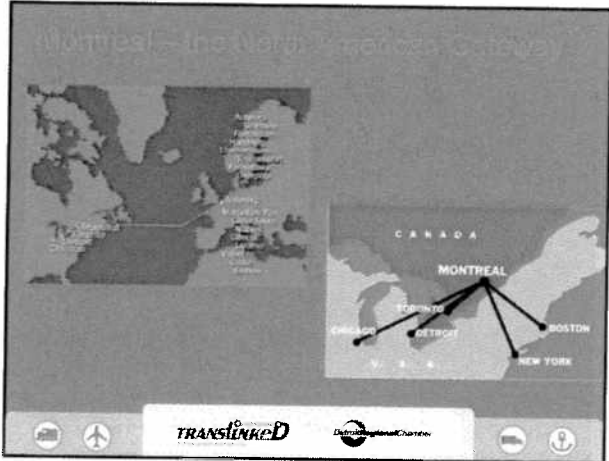
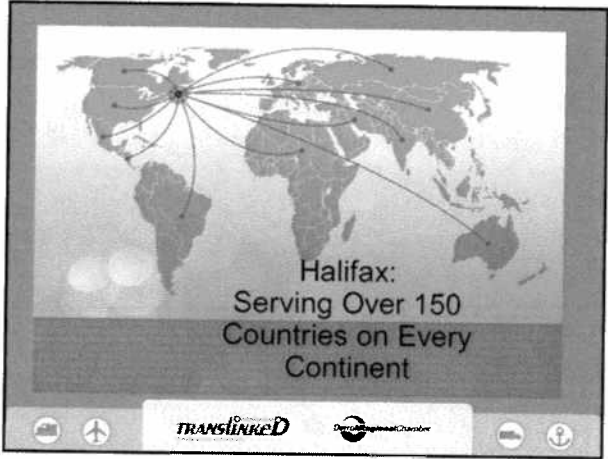
TRANSLINKED Mission

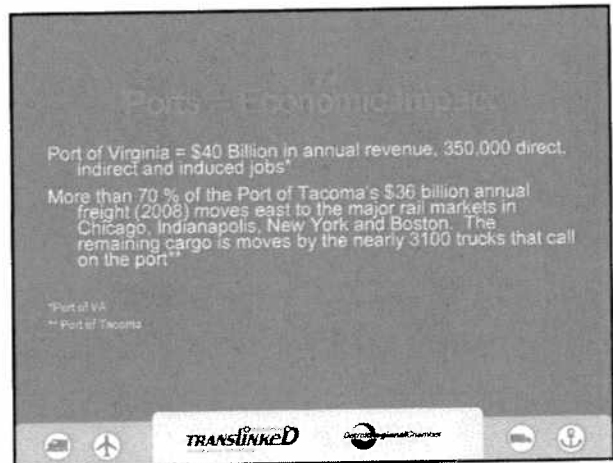
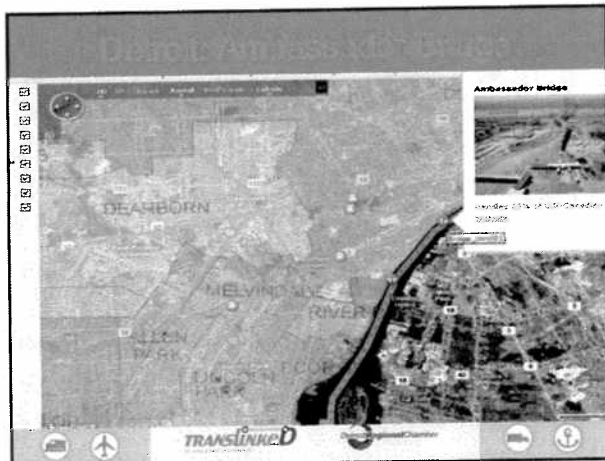
- Build** the region's global reputation as a prime trading and distribution point.
- Leverage** the Detroit Region's transportation assets for business attraction and growth.
- Continue** to build on assets that will generate opportunity and prosperity for the region.

1. Prime North American location
2. Access through all modes
3. Key assets to leverage economic development
4. Top supply chain and logistics industry talent

TRANSLINKED Detroit Regional Chamber

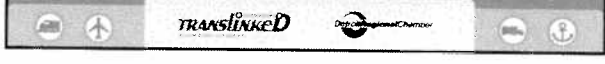






Improving Infrastructure and Economic Competitiveness

- Develop a mechanism for investment in key freight infrastructure
- Design infrastructure to serve core and target industries
- Connect economic development and transportation development



Questions

Melissa Roy
@melissaroy1
Senior Director, Government Relations
Detroit Regional Chamber
www.detroitregionalchamber.com

